

# PRODUCTS CATALOGUE

"AT EASE IN YOUR CONSTRUCTION SITE"

[www.ritmo.it](http://www.ritmo.it)





## **Ritmo meets all your welding needs in your jobsite**



The information and photos in this publication are not binding and RITMO S.P.A. is free to make any alterations without prior notice.



# A DVANTAGE

## RITMO



### **RITMO WORLDWIDE**

Ritmo has professional distributors and resellers all over the world. Our staff is ready to assist you in English, Spanish, French, German, Arab, Italian, Russian and Portuguese.

### **TRAINING**

From many years now, we have decided that the best way to grant a client/distributor a perfect knowledge of our products is to invest in custom training, in our own premises. These courses are aimed to teach how to operate the products in the best way, and how to supply the "first aid" when necessary.

### **PRESALES TECHNICAL ASSISTANCE**

When a client or a potential client wants to buy us a product, it is our standard procedure to help find the best solution to its needs.

### **GLOBAL ADVICE**

In such a technical field as ours, the customer requires the best assistance. Thanks to the experience developed along the years, and to the co-operation with several manufacturers, institutions, schools and training institutes, RITMO is able to give the most comprehensive advice to no matter which related issue. Our company is a long-time member of a UNIPLAST's (UNI-Italian National Plastics Standards Body) working group dedicated to the study and draw up of new standards within our field. The importance of this group is linked to the fact that the expansion of the plastic welding field ought to be followed by a crescent sensitivity for safety issues, so to have a sustainable and continuous growth. The working group prepares draws, hence present them to the UNI to be discussed and eventually transformed into new standards.

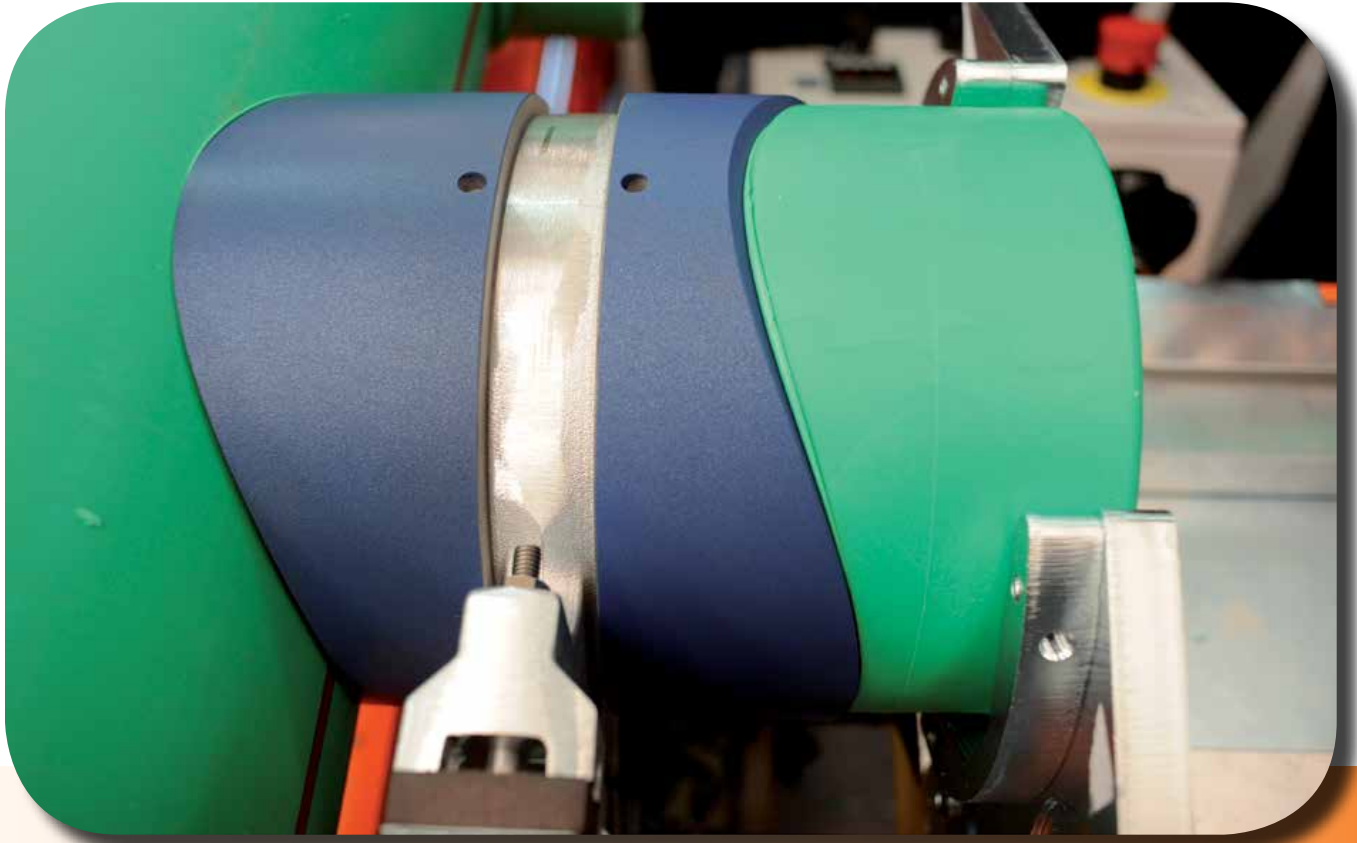
### **AFTER SALES TECHNICAL ASSISTANCE**

Ritmo's Service Centre can solve all kind of technical issues, as well as overhaul our machines. Ritmo has other Service Centres abroad, linked to its official distributors.

### **STARTING AND TESTING**

RITMO' technicians are prepared to make the starting and testing of workshop machines at the client' own premises, so that the fittings production can start almost immediately.

# SOCKET WELDERS

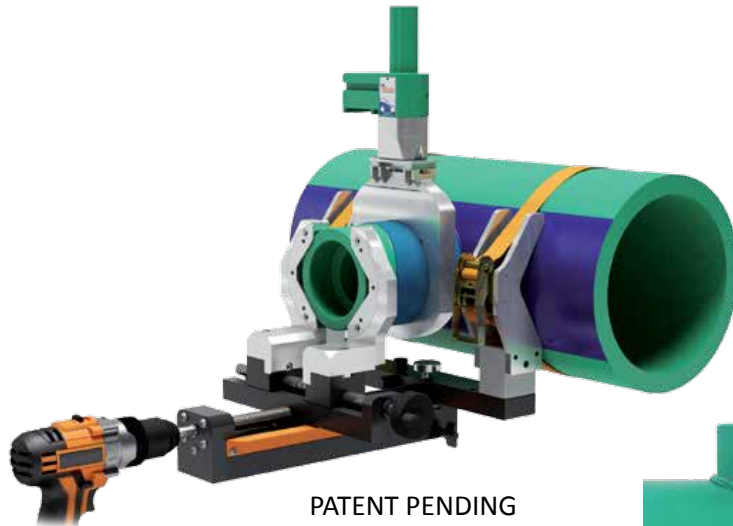


WORKING RANGE Ø mm	16	20	25	32	40	50	63	75	90	110	125
<b>MANUAL EQUIPMENT</b> R 25	16	20	25								
R 63	16	20	25	32	40	50	63				
R 125 Q	16	20	25	32	40	50	63	75	90	110	125
WORKING RANGE Ø mm	16	20	25	32	40	50	63	75	90	110	125

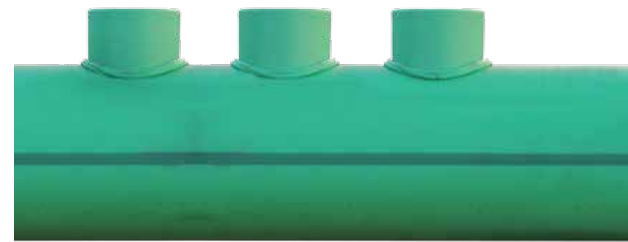
WORKING RANGE Ø mm	20	25	32	40	50	63	75	90	110	125
<b>SOCKET FUSION MACHINE</b> PRISMA JIG	20	25	32	40	50	63				
PRISMA 125 LIGHT	20	25	32	40	50	63				
PRISMA 125		25	32	40	50	63	75	90	110	125
WORKING RANGE Ø mm	20	25	32	40	50	63	75	90	110	125

 ON REQUEST

WORKING RANGE Ø mm	
<b>SADDLE SOCKET FUSION MACHINE</b> PRISMA UP 90	MAIN PIPE 63 ÷ 250 mm SADDLE FITTING 20 ÷ 90 mm
FM 630-125	MAIN PIPE 50 ÷ 630 mm SADDLE FITTING 20 ÷ 125 mm



watch the video



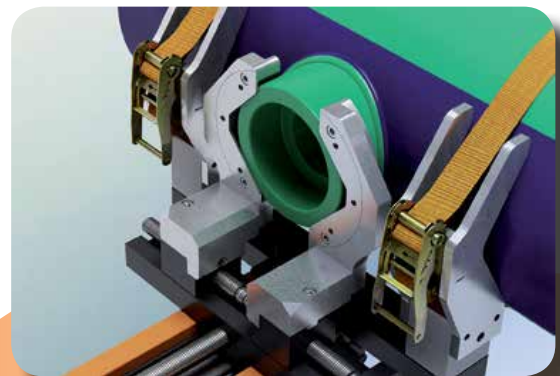
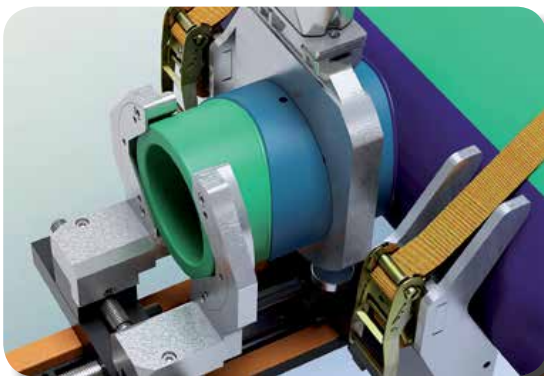
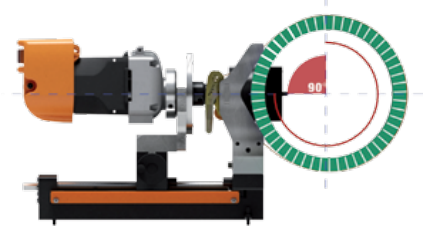
## PRISMA UP 90

Prisma Up 90 is a special PP-R saddle socket fusion machine. The machine is designed to weld special PP-R joints like collectors and reduced branches. The light weight of the machine enables an easy fixing. Working range: main pipe  $\varnothing$  63 ÷ 250 mm; branch pipe: 20 ÷ 90 mm.

The machine is composed of two assembly parts: a main jaws bracket and a frame with fitting carriage jaws. The main jaws bracket is light for an easy fixing on the main pipe. The fitting carriage jaws are designed to mount a driller with hole saw and fitting.

The welding machine makes a perfect centering of drilling and socket weld as well as the perfect alignment between pipe and fitting.

The saddle sockets installed on a manual socket welder, heat up the pipe and fitting surfaces. After the heating phase, the fitting is pushed inside the pipe thanks to a screw system which ensures a perfect alignment of the fittings. Available saddle sockets or major brands.



## TECHNICAL FEATURES

**PLUS**

**WORK  
IN TIGHT SPACES**

**PERFECT  
CENTERING  
PIPE/FITTING**

**LIGHT WEIGHT**

Working range - main pipe	63 ÷ 250 mm
Working range - branch pipe	20 ÷ 90 mm
Materials	PP-R
Power supply	110 V or 230 V S.Phase 50/60 Hz
Total absorbed power driller	1200 W
Total absorbed power R 125 Q	1400 W
Working temperature R 125 Q	260° (± 10° C)
Overall dimensions (without driller, heater)	410 x 410 x 270 mm 16.4" x 16.4" x 10.6"
Overall dimensions (without driller)	410 x 410 x 407 mm 16.4" x 16.4" x 16"
Weight: machine without driller, heater	10,8 Kg (23.8 lb)
Weight: main jaws bracket	2,7 Kg (5.9 lb)
Weight: frame with fitting carriage jaws	8, 1 Kg ( 17.8 lb)
Weight: driiller	3, 5 Kg (7.7 lb)
Transport case Prisma UP 90	390 x 350 x 500 mm 15.3" x 13.8" x 19.7"
Transport case Socket welder	405 x 175 x 50 mm 15.9" x 6.8" x 1.9"

### STANDARD COMPOSITION

- Welding machine body complete with: frame, fittings carriage jaws, main jaw bracket assembly
- Electric drill
- R 125 Q TFE hand socket welder with transport case
- Transport case for machine body

### ON REQUEST



Saddle sockets  
of major Brands



Hole Saw

- and:
- Clamp set for socket fusion pipe on reducer
  - Support for manifolds







**Ritmo**  
PLASTIC WELDING TECHNOLOGY





The information and photos in this publication are not binding and RITMO S.P.A. is free to make any alterations without prior notice.





**RITMO S.p.A.**

Via A. Volta, 35/37 - 35037  
Bresseo di Teolo (PADOVA) ITALY

Ph. +39 049 9901888  
Fax +39 049 9901993

[info@ritmo.it](mailto:info@ritmo.it)  
[www.ritmo.it](http://www.ritmo.it)

