

# PRODUCTS CATALOGUE

"AT EASE IN YOUR CONSTRUCTION SITE"

[www.ritmo.it](http://www.ritmo.it)





# Ritmo meets all your welding needs in your jobsite



The information and photos in this publication are not binding and RITMO S.P.A. is free to make any alterations without prior notice.

# A DVANTAGE

## RITMO



### **RITMO WORLDWIDE**

Ritmo has professional distributors and resellers all over the world. Our staff is ready to assist you in English, Spanish, French, German, Arab, Italian, Russian and Portuguese.

### **TRAINING**

From many years now, we have decided that the best way to grant a client/distributor a perfect knowledge of our products is to invest in custom training, in our own premises. These courses are aimed to teach how to operate the products in the best way, and how to supply the "first aid" when necessary.

### **PRESALES TECHNICAL ASSISTANCE**

When a client or a potential client wants to buy us a product, it is our standard procedure to help find the best solution to its needs.

### **GLOBAL ADVICE**

In such a technical field as ours, the customer requires the best assistance. Thanks to the experience developed along the years, and to the co-operation with several manufacturers, institutions, schools and training institutes, RITMO is able to give the most comprehensive advice to no matter which related issue. Our company is a long-time member of a UNIPLAST's (UNI-Italian National Plastics Standards Body) working group dedicated to the study and draw up of new standards within our field. The importance of this group is linked to the fact that the expansion of the plastic welding field ought to be followed by a crescent sensitivity for safety issues, so to have a sustainable and continuous growth. The working group prepares draws, hence present them to the UNI to be discussed and eventually transformed into new standards.

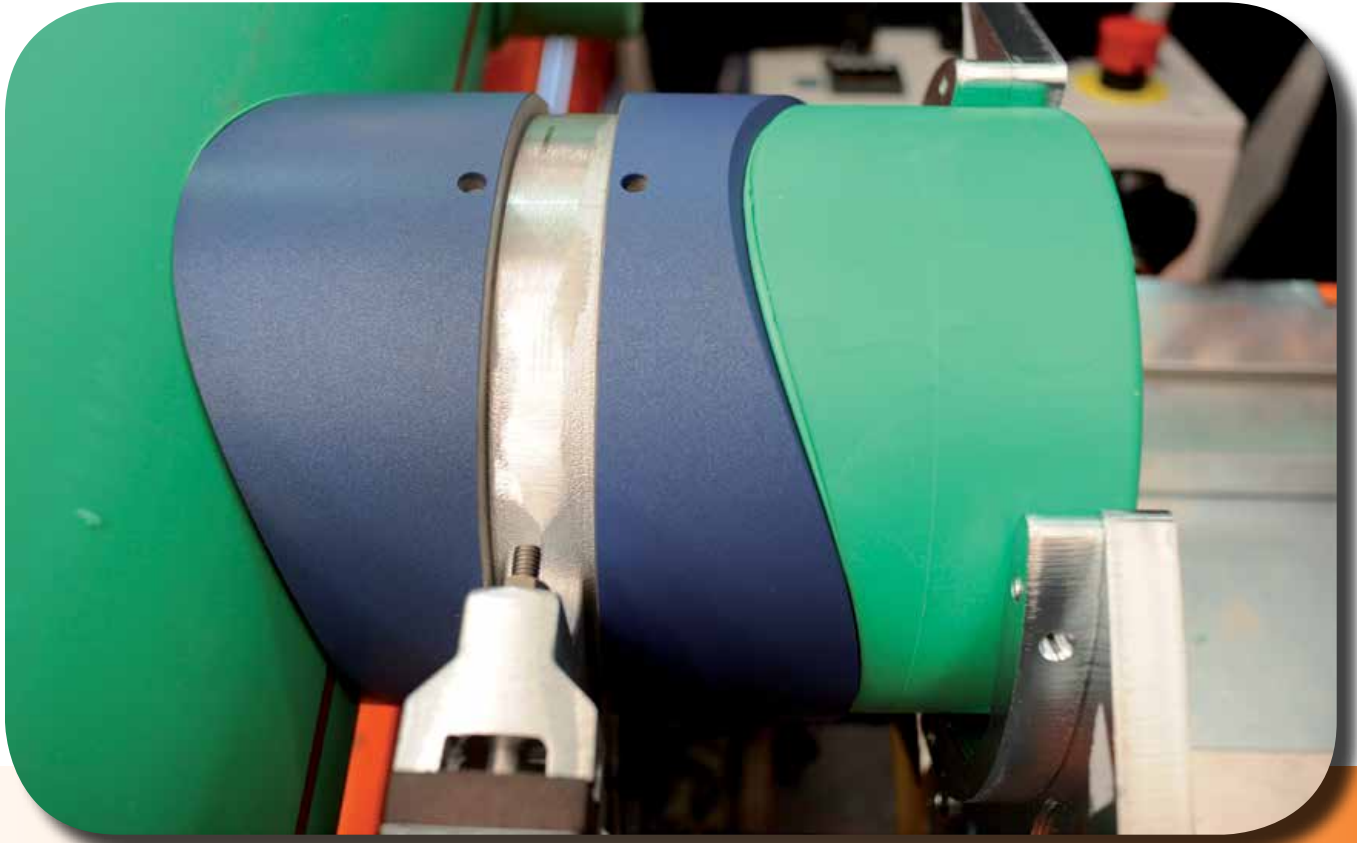
### **AFTER SALES TECHNICAL ASSISTANCE**

Ritmo's Service Centre can solve all kind of technical issues, as well as overhaul our machines. Ritmo has other Service Centres abroad, linked to its official distributors.

### **STARTING AND TESTING**

RITMO' technicians are prepared to make the starting and testing of workshop machines at the client' own premises, so that the fittings production can start almost immediately.

# SOCKET WELDERS



## MANUAL EQUIPMENT

WORKING RANGE Ø mm	16	20	25	32	40	50	63	75	90	110	125
R 25	16	20	25								
R 63	16	20	25	32	40	50	63				
R 125 Q	16	20	25	32	40	50	63	75	90	110	125
WORKING RANGE Ø mm	16	20	25	32	40	50	63	75	90	110	125

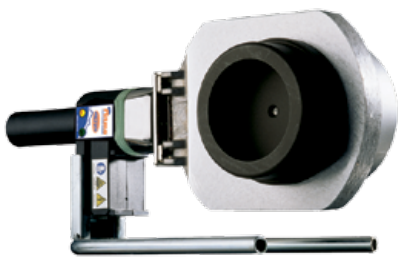
## SOCKET FUSION MACHINE

WORKING RANGE Ø mm	20	25	32	40	50	63	75	90	110	125
PRISMA JIG	20	25	32	40	50	63				
PRISMA 125 LIGHT	20	25	32	40	50	63				
PRISMA 125		25	32	40	50	63	75	90	110	125
WORKING RANGE Ø mm	20	25	32	40	50	63	75	90	110	125

 ON REQUEST

## SADDLE SOCKET FUSION MACHINE

WORKING RANGE Ø mm	
PRISMA UP 90	MAIN PIPE 40 ÷ 250 mm (on request up to 630 mm) SADDLE FITTING 20 ÷ 90 mm
FM 630-125	MAIN PIPE 50 ÷ 630 mm SADDLE FITTING 20 ÷ 125 mm



R 125 Q



R 63



R 25

## MANUAL EQUIPMENT

Manual SOCKET welders for joining pipes and fittings, in compliance with the standards in force. They feature an aluminum heating plate and a practical, heat-insulated plastic handle. They can weld HDPE, PP, PP-R, PVDF pipes and fittings, and they're characterized by different shapes and working ranges, suitable for different applications. They're available with an adjustable electronic thermoregulator (TE), or with a fixed electronic thermostat (TFE).

This new TFE control system features a new self-diagnostic device, provided with an alarm, which would alert the operator in case of anomaly; at the same time, the heating element would switch off automatically. Thanks to an algorithm PID microcontroller, combined with a platinum sensor, the temperature control system can react faster to the external temperature fluctuations, and guarantee higher reliability and longer durability.

### STANDARD COMPOSITION

- Socket welder
- Fork support
- Bench vice (except R 25)
- Allen wrench
- Pin for sockets & spigots

### ON REQUEST

- Bench vice (for R 25)
- Sockets and spigots (male/female)
- Carrying case in electro-painted steel
- R 63 Insulated bag



### TECHNICAL FEATURES

TYPE: TE, TFE	R 25	R 63	R 125 Q
Working range	up to $\varnothing$ 25 mm	up to $\varnothing$ 63 mm	up to $\varnothing$ 125 mm
Materials	HDPE, PP, PP-R PB, PVDF	HDPE, PP, PP-R PB, PVDF	HDPE, PP, PP-R PB, PVDF
Power supply (TE)	230 V S. Ph. 50/60 Hz	230 V S. Ph. 50/60 Hz	230 V S. Ph. 50/60 Hz
Power supply (TFE)	110 V S. Ph. 50/60 Hz 230 V S. Ph. 50/60 Hz	110 V S. Ph. 50/60 Hz 230 V S. Ph. 50/60 Hz	110 V S. Ph. 50/60 Hz 230 V S. Ph. 50/60 Hz
Max. absorbed power	500 W	800 W	1400 W
Working temperature	260° C ( $\pm$ 10° C) TFE 500° F ( $\pm$ 50° F) TFE 180° ÷ 290° C TE 356° ÷ 554° F TE	260° C ( $\pm$ 10° C) TFE 500° F ( $\pm$ 50° F) TFE 180° ÷ 290° C TE 356° ÷ 554° F TE	260° C ( $\pm$ 10° C) TFE 500° F ( $\pm$ 50° F) TFE 180° ÷ 290° C TE 356° ÷ 554° F TE
Ambient temperature	-5° ÷ 40° C (23° ÷ 104° F)	-5° ÷ 40° C (23° ÷ 104° F)	-5° ÷ 40° C (23° ÷ 104° F)
Weight	1,44 Kg (3.1 lb)	1,82 Kg (4 lb)	3,16 Kg (7 lb)
Dimensions	115 x 50 x 320 mm 4.5" x 2" x 12.6"	175 x 50 x 360 mm 6.9" x 2" x 14.1"	175 x 50 x 395 mm 6.9" x 2" x 15.5"



# SOCKET & SPIGOT

These accessories are necessary for the socket fusion of pipes and fittings.

They were designed in accordance to the German standards, for which there are two version, "A" and "B", different in size and welding coupling depths.

## Type A

Ø16 SOCKET & SPIGOT (A)  
 Ø 20 SOCKET & SPIGOT (A)  
 Ø 25 SOCKET & SPIGOT (A)  
 Ø 32 SOCKET & SPIGOT (A)  
 Ø 40 SOCKET & SPIGOT (A)  
 Ø 50 SOCKET & SPIGOT (A)  
 Ø 63 SOCKET & SPIGOT (A)  
 Ø 75 SOCKET & SPIGOT (A)  
 Ø 90 SOCKET & SPIGOT (A)  
 Ø 110 SOCKET & SPIGOT (A)  
 Ø 125 SOCKET & SPIGOT (A)

## Type B

Ø16 SOCKET & SPIGOT (B)  
 Ø 20 SOCKET & SPIGOT (B)  
 Ø 25 SOCKET & SPIGOT (B)  
 Ø 32 SOCKET & SPIGOT (B)  
 Ø 40 SOCKET & SPIGOT (B)  
 Ø 50 SOCKET & SPIGOT (B)  
 Ø 63 SOCKET & SPIGOT (B)  
 Ø 75 SOCKET & SPIGOT (B)  
 Ø 90 SOCKET & SPIGOT (B)  
 Ø 110 SOCKET & SPIGOT (B)  
 Ø 125 SOCKET & SPIGOT (B)

## Type "AQ"

Ø 20 SOCKET & SPIGOT TYPE-AQ  
 Ø 25 SOCKET & SPIGOT TYPE-AQ  
 Ø 32 SOCKET & SPIGOT TYPE-AQ  
 Ø 40 SOCKET & SPIGOT TYPE-AQ  
 Ø 50 SOCKET & SPIGOT TYPE-AQ  
 Ø 63 SOCKET & SPIGOT TYPE-AQ  
 Ø 75 SOCKET & SPIGOT TYPE-AQ  
 Ø 90 SOCKET & SPIGOT TYPE-AQ  
 Ø 110 SOCKET & SPIGOT TYPE-AQ  
 Ø 125 SOCKET & SPIGOT TYPE-AQ

## Saddles socket CTS

Ø ½" CTS SOCKET & SPIGOT  
 Ø ¾" CTS SOCKET & SPIGOT  
 Ø 1" CTS SOCKET & SPIGOT  
 Ø 1¼" CTS SOCKET & SPIGOT

## Saddles socket IPS

Ø ½" IPS SOCKET & SPIGOT  
 Ø ¾" IPS SOCKET & SPIGOT  
 Ø 1" IPS SOCKET & SPIGOT  
 Ø 1¼" IPS SOCKET & SPIGOT  
 Ø 1 ½" IPS SOCKET & SPIGOT  
 Ø 2" IPS SOCKET & SPIGOT  
 Ø 3" IPS SOCKET & SPIGOT  
 Ø 4" IPS SOCKET & SPIGOT

## Hole repairing Sockets and accessories

Ø 7 mm HOLE REPAIRING SOCKET & SPIGOT  
 Ø 8 mm HOLE REPAIRING SOCKET & SPIGOT  
 Ø 11 mm HOLE REPAIRING SOCKET & SPIGOT  
 CLOSING TAPS SET - PE (20 PCS)  
 CLOSING TAPS SET - ORANGE PP (20 PCS)

TYPE A

TYPE B





**\* Saddle sockets metric  
"AQ"**

- Ø 40-20/25 AQ SADDLE SOCKET
- Ø 50-20/25 AQ SADDLE SOCKET
- Ø 63-20/25 AQ SADDLE SOCKET
- Ø 63-32 AQ SADDLE SOCKET
- Ø 75-20/25 AQ SADDLE SOCKET
- Ø 75-32 AQ SADDLE SOCKET
- Ø 75-40 AQ SADDLE SOCKET
- Ø 90-20/25 AQ SADDLE SOCKET
- Ø 90-32 AQ SADDLE SOCKET
- Ø 90-40 AQ SADDLE SOCKET
- Ø 110-20/25 AQ SADDLE SOCKET
- Ø 110-32 AQ SADDLE SOCKET
- Ø 110-40 AQ SADDLE SOCKET
- Ø 110-50 AQ SADDLE SOCKET
- Ø 125-20/25 AQ SADDLE SOCKET
- Ø 125-32 AQ SADDLE SOCKET
- Ø 125-40 AQ SADDLE SOCKET
- Ø 125-50 AQ SADDLE SOCKET
- Ø 125-63 AQ SADDLE SOCKET
- Ø 160-20/25 AQ SADDLE SOCKET
- Ø 160-32 AQ SADDLE SOCKET
- Ø 160-40 AQ SADDLE SOCKET
- Ø 160-50 AQ SADDLE SOCKET
- Ø 160-63 AQ SADDLE SOCKET
- Ø 160-75 AQ SADDLE SOCKET
- Ø 160-90 AQ SADDLE SOCKET
- Ø 200-20/25 AQ SADDLE SOCKET
- Ø 200-50 AQ SADDLE SOCKET
- Ø 200-63 AQ SADDLE SOCKET
- Ø 200-75 AQ SADDLE SOCKET
- Ø 200-90 AQ SADDLE SOCKET
- Ø 200-110 AQ SADDLE SOCKET
- Ø 200-125 AQ SADDLE SOCKET
- Ø 250-50 AQ SADDLE SOCKET
- Ø 250-63 AQ SADDLE SOCKET
- Ø 250-75 AQ SADDLE SOCKET
- Ø 250-90 AQ SADDLE SOCKET
- Ø 250-110 AQ SADDLE SOCKET
- Ø 250-125 AQ SADDLE SOCKET

**\* Saddle sockets metric  
"N"**

- Ø 40-20/25 N SADDLE SOCKET
- Ø 50-20/25 N SADDLE SOCKET
- Ø 63-20/25 N SADDLE SOCKET
- Ø 63-32 N SADDLE SOCKET
- Ø 75-20/25 N SADDLE SOCKET
- Ø 75-32 N SADDLE SOCKET
- Ø 90-20/25 N SADDLE SOCKET
- Ø 90-32 N SADDLE SOCKET
- Ø 90-40 N SADDLE SOCKET
- Ø 90-50 N SADDLE SOCKET
- Ø 110-20/25 N SADDLE SOCKET
- Ø 110-32 N SADDLE SOCKET
- Ø 110-40 N SADDLE SOCKET
- Ø 110-50 N SADDLE SOCKET
- Ø 110-63 N SADDLE SOCKET
- Ø 125-20/25 N SADDLE SOCKET
- Ø 125-32 N SADDLE SOCKET
- Ø 125-40 N SADDLE SOCKET
- Ø 125-50 N SADDLE SOCKET
- Ø 125-63 N SADDLE SOCKET
- Ø 160-20/25 N SADDLE SOCKET
- Ø 160-32 N SADDLE SOCKET
- Ø 160-40 N SADDLE SOCKET
- Ø 160-50 N SADDLE SOCKET
- Ø 160-63 N SADDLE SOCKET
- Ø 200-20/25 N SADDLE SOCKET
- Ø 200-32 N SADDLE SOCKET
- Ø 200-40 N SADDLE SOCKET
- Ø 200-50 N SADDLE SOCKET
- Ø 200-63 N SADDLE SOCKET
- Ø 250-20/25 N SADDLE SOCKET
- Ø 250-32 N SADDLE SOCKET
- Ø 250-40 N SADDLE SOCKET
- Ø 250-50 N SADDLE SOCKET
- Ø 250-63 N SADDLE SOCKET
- Ø 315-32 N SADDLE SOCKET
- Ø 315-40 N SADDLE SOCKET
- Ø 315-50 N SADDLE SOCKET
- Ø 315-63 N SADDLE SOCKET

\* Contact RITMO S.P.A. for more details



**Ritmo**  
PLASTIC WELDING TECHNOLOGY





**RITMO S.p.A.**

Via A. Volta, 35/37 - 35037  
Bressano di Teolo (PADOVA) ITALY

Ph. +39 049 9901888  
Fax +39 049 9901993

[info@ritmo.it](mailto:info@ritmo.it)  
[www.ritmo.it](http://www.ritmo.it)



Watch  
the Corporate Video